

MEMO TO SUPPLIERS ^{1/2}

Background

France and Europe have introduced a new environmental regulation concerning professional packaging.

While the regulatory framework was established in 2025, its implementation will effectively start in early 2026. From that date, the management and recycling of professional packaging will be covered by a dedicated compliance scheme under the Extended Producer Responsibility (EPR) framework. This regulation applies to any company placing products on the French market that are packaged for professional use (B2B) – including both French producers and foreign suppliers exporting to France.

Purpose of the new scheme

The objective of this new regulation is to:

- » Improve the recyclability and recovery of packaging used in professional activities;
- » Reduce the environmental impact of packaging throughout its life cycle;
- » Ensure traceability and transparency of all packaging materials placed on the French market.

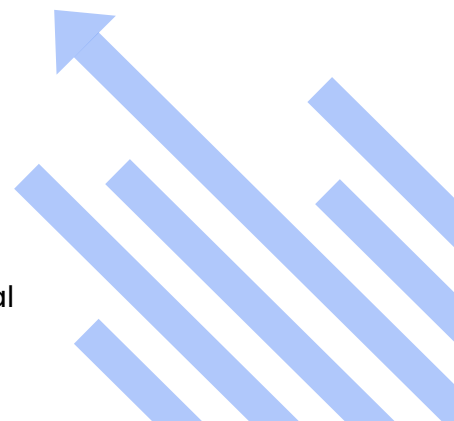
The role of CITEO PRO

To implement this new regulation, the French authorities will soon approve dedicated compliance organizations for the professional packaging scheme. CITEO PRO is currently a candidate for official approval and is actively anticipating the launch of the new system.

CITEO PRO's objective is to:

- » Manage the collection and recycling system for professional packaging;
- » Support companies in meeting their upcoming regulatory obligations.
- » Collect packaging data and calculate the environmental contributions that will be due once the scheme becomes operational.

Although the approval process is still ongoing, CITEO PRO is already working with companies to help them identify and prepare their professional packaging data ahead of the official start of the EPR system in early 2026.



MEMO TO SUPPLIERS ^{2/2}

Why your cooperation is essential ?

To anticipate the regulation, our company needs to map professional packaging related to the products we import or sell in France for 2025.

We need to collect certain technical data about the packaging supplied by our European and international partners.

Please find enclosed on excel sheet with the main data to fill in.

Your collaboration is essential to help us:

- Identify the types of packaging used;
- Understand their composition and weight;
- Ensure their compliance with French EPR requirements.

Information required

For each packaging component used for your products, we kindly ask you to provide the following details:

This information will enable us to:

- Complete our official declaration to CITEO PRO;
- Ensure full regulatory compliance for our products sold in France;
- Strengthen environmental traceability within our supply chain.

Any questions? Contact us!

For any questions or clarifications, please do not hesitate to contact our team or CITEO PRO's hotline.

We sincerely thank you for your cooperation and your commitment to building a more circular and responsible economy.

0 800 00 75 00
info@citeopro.com

Published November 2025. This document is the property of CITEO PRO. It is provided for information purposes only and does not constitute legal advice or recommendations. While every effort has been made to ensure that the information contained in this document is correct and up-to-date, CITEO PRO accepts no liability for any errors or omissions. CITEO PRO does not guarantee the continuity or completeness of the information contained in this document, particularly with regard to changes to and interpretations of current regulations, the state of the art and the EPR systems for food service packaging. As such, the holder remains solely liable for use of this document.